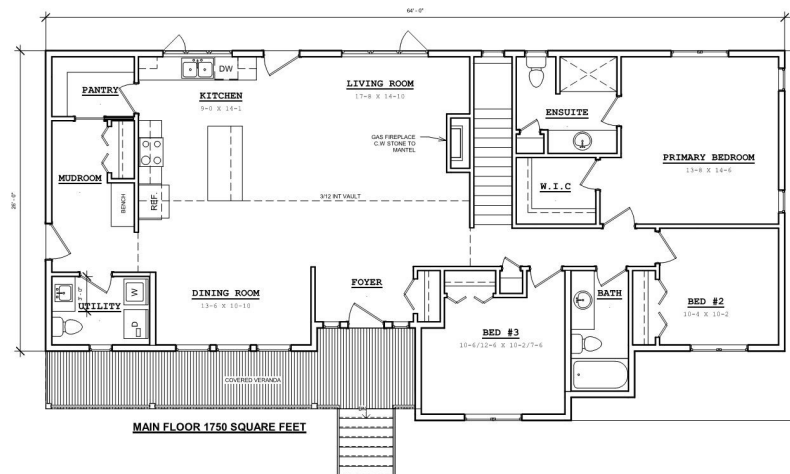


THE GRENFELL

1750 Square Feet

FEATURES

LARGE COVERED PORCH
QUARTZ COUNTERTOPS
VAULTED CEILING
TRIPLE GLAZED WINDOWS
R-24 WALL INSULATION
R-62 CEILING INSULATION
GAS FIREPLACE
MAIN FLOOR LAUNDRY
WALK-THRU PANTRY
BENCH IN MUDROOM

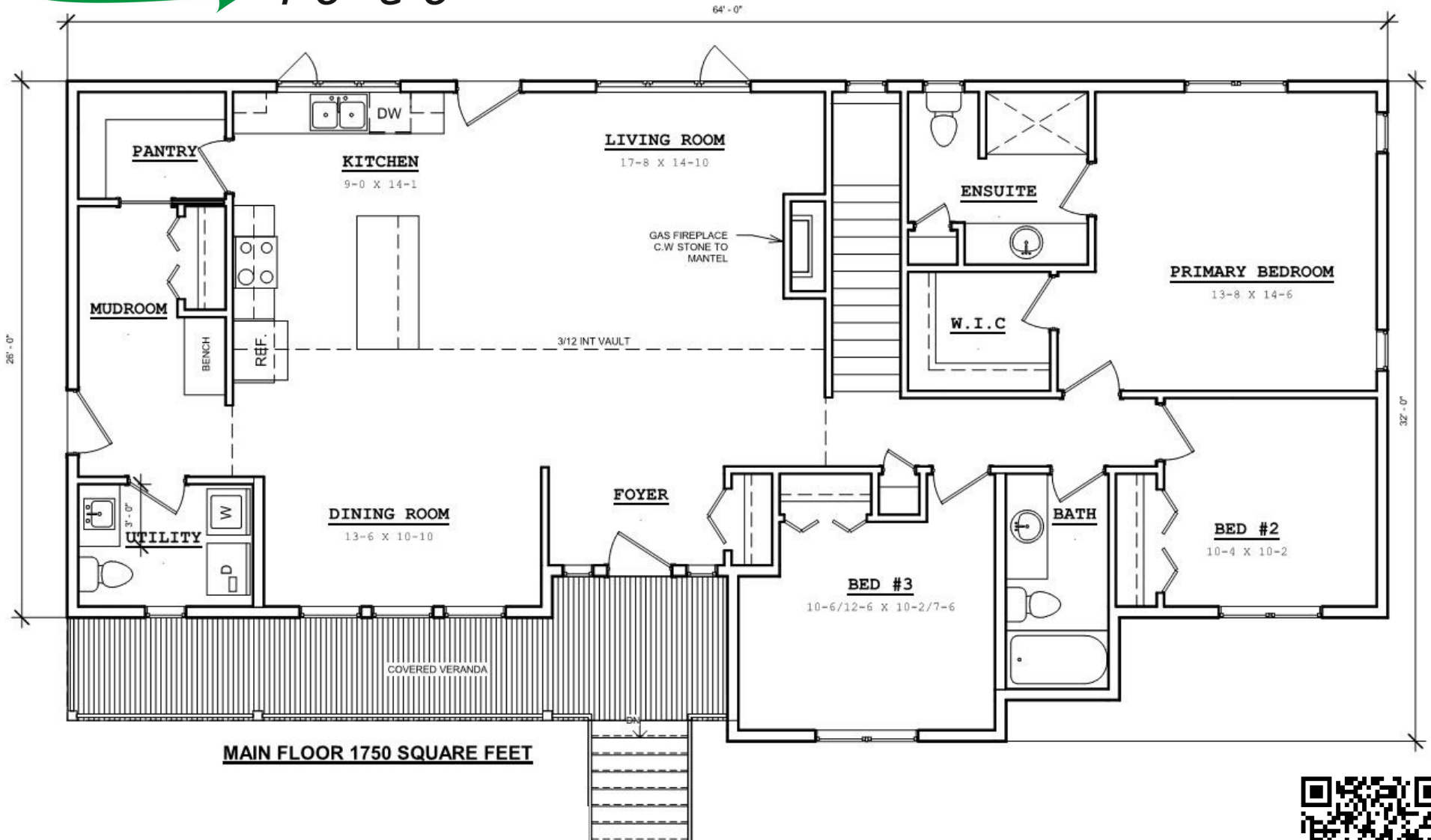


CONTACT US TODAY!

(780) 875 9260

www.newhomesforyou.ca

[f@newhomesforyou](https://www.facebook.com/newhomesforyou)



THE GRENFELL



Scan for more info